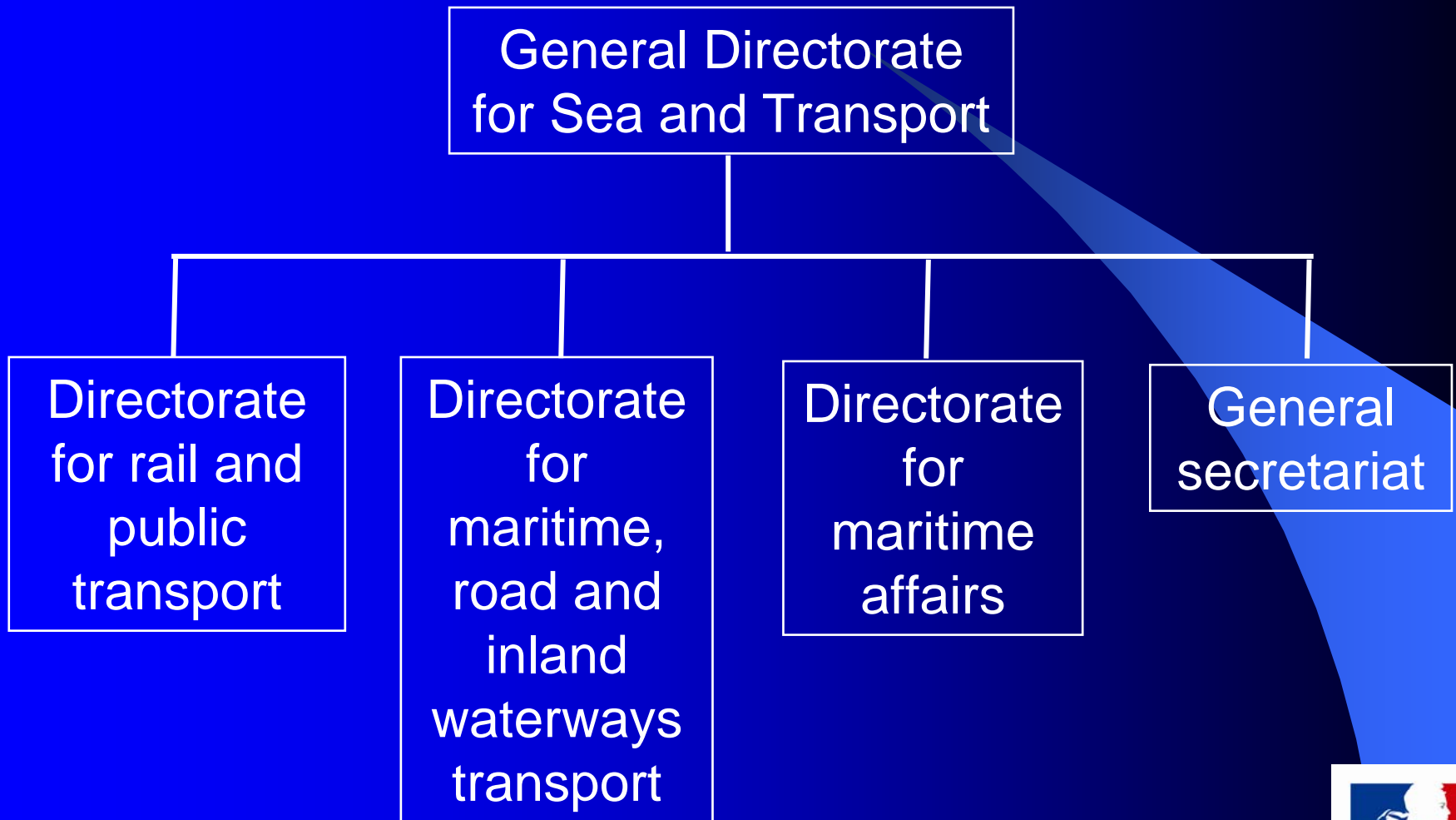


# INSTITUTIONAL ORGANIZATION OF FRENCH RAILWAY SECTOR



# Recent changes in the organization



# State's Responsibility

- To elaborate and ensure implementation of laws and regulations
- To decide on and to finance infrastructure projects
- To stabilise the financial situation of the system as a whole
- To compensate pension regimes, social fares and other PSO

# The 1997 Reform

- Creation of a separate and independent infrastructure manager
- EPIC = Public company with business purpose:
  - Public service mission
  - Public authority privilege on some fields
  - Management autonomy

# RFF's Missions

- RFF is the real owner of the national railway network (29000 km lines, 15000 other tracks, marshalling yards, signaling and safety equipment)
- Responsible over the national railway network for:
  - Network planning and valorization
  - Maintenance, renewal and upgrading of existing lines
  - Developing new lines

# SNCF's Missions from 1997



- SNCF keeps the stations, depots and workshops
- Operate transport services
- On RFF's behalf , as « delegated infrastructure manager » :
  - to prepare the yearly timetable,
  - to manage the trafic and the safety,
  - to ensure the maintenance of the network

# State - RFF Relationship

- State owned company
- Member of the board, plus « Commissaire du Gouvernement »
- Very dependent on financial aspects for investissements as well as for maintenance, renewal or operating costs
- But merely independent for management of the real estate and internal organisation

# State - SNCF Relationship

- State owned company
- Member of the board, plus  
« Commissaire du Gouvernement »
- Compensated public service obligations
- Independent self management on business matters

# Control bodys

- State Accounting Court
- MCEFT (1949)
- CNT (1982)
- CSSPF ( 1998)
- MCAF (2003)

# RFF – SNCF Relationship

- Infrastructure management Agreement
- Real estate management Agreement
- Agreement « SNCF as public work undertaking »
- Re-distribution of real estate and patrimony

# Infrastructure Management Agreement

- RFF set yearly objectives and program for big works
- SNCF keeps the technical requirements and methodology
- SNCF carries out the mandate
- Sets control and detailed reporting
- Contractual global payment:
  - Timetabling (60M€)
  - Traffic management (700M€)
  - Maintenance (1 840M€)

# 2006's SITUATION

(in billion €)

*State*

2.800

Infrastructure  
(specific investments  
not included)

3.200

Social fares, pensions, etc.

Infrastructure management Agreement

*RFF*

2.600

2.400

Infrastructure charges

*SNCF*

# Railway Safety

- Parties involved:
  - Ministry
  - EPSF: National Office for Railway Safety
  - BEATT: Investigating body
  - RFF and SNCF-DIM
  - Railway undertakings
  - Railway industry and others

# Ministry's Safety Missions

- Establish and publish laws and regulations
- Take major decisions
- Establish and publish safety regulation, including common safety targets, methods and indicators
- Tutor of the public companies and of the national office for safety
- Social dialogue in safety matters

# EPSF's Missions

- Contribution to safety regulation,
- Delivery of authorisations (new systems, safety agreements and certificates)
- Safety audits, inspections and supervision
- Agreement of national bodies, training centres, ...
- Relations with other national authorities
- Registers, annual report

# BEATT's Missions

- Investigating body according to Dir. 2004/49
- Totally independent
- Reports on incidents and accidents
- Recommendations

# Infrastructure manager's and Railway undertaking's duties

- Safety management system
- Provide assistance and access for controls, audits, or investigations

# State of market opening and competition

- Freight:

Fully open market since end of march 2006

- Passenger:

- National: no opening at this stage

- International:

- access rights for EU groupings

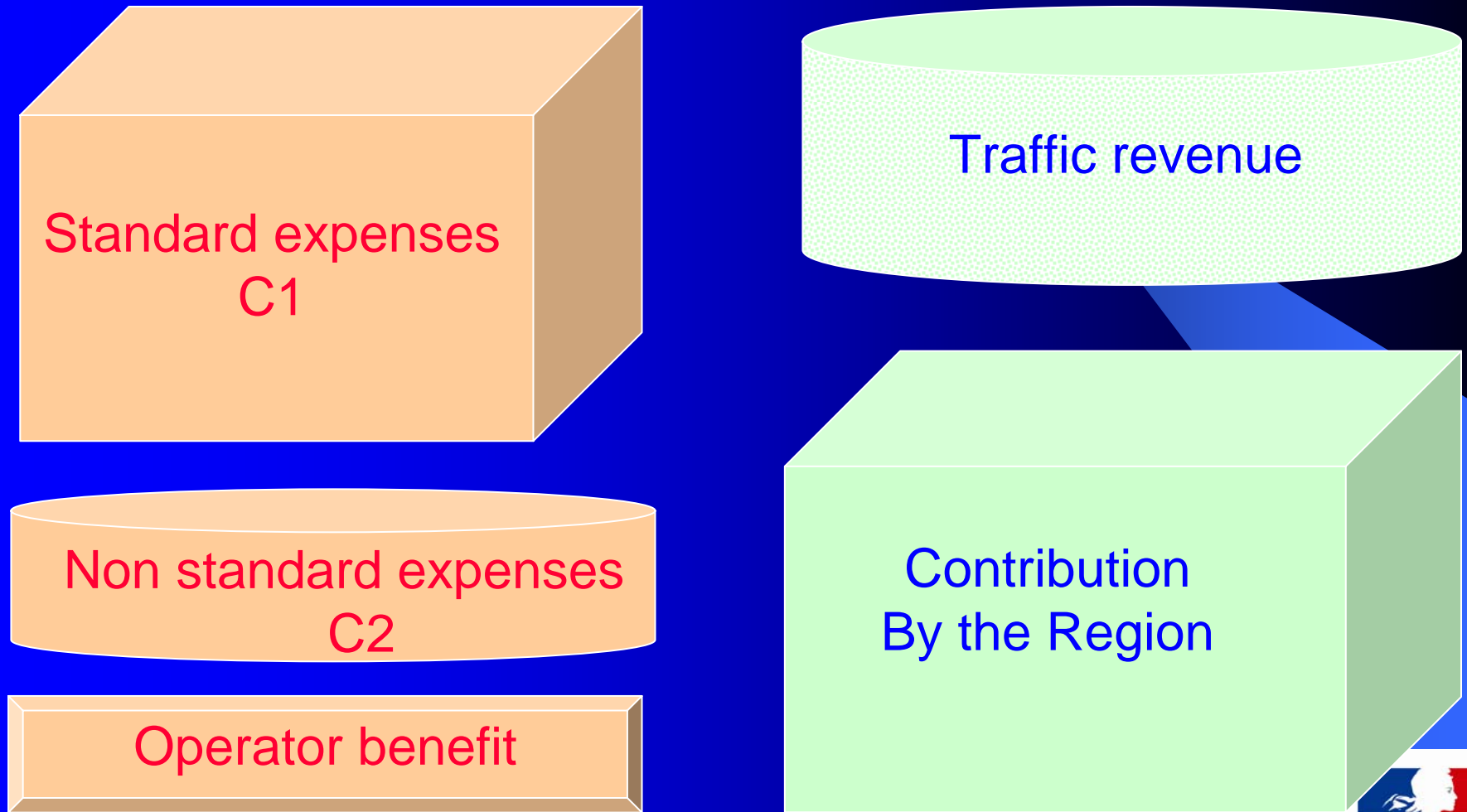
- International cooperation

- Opening following “3rd package”

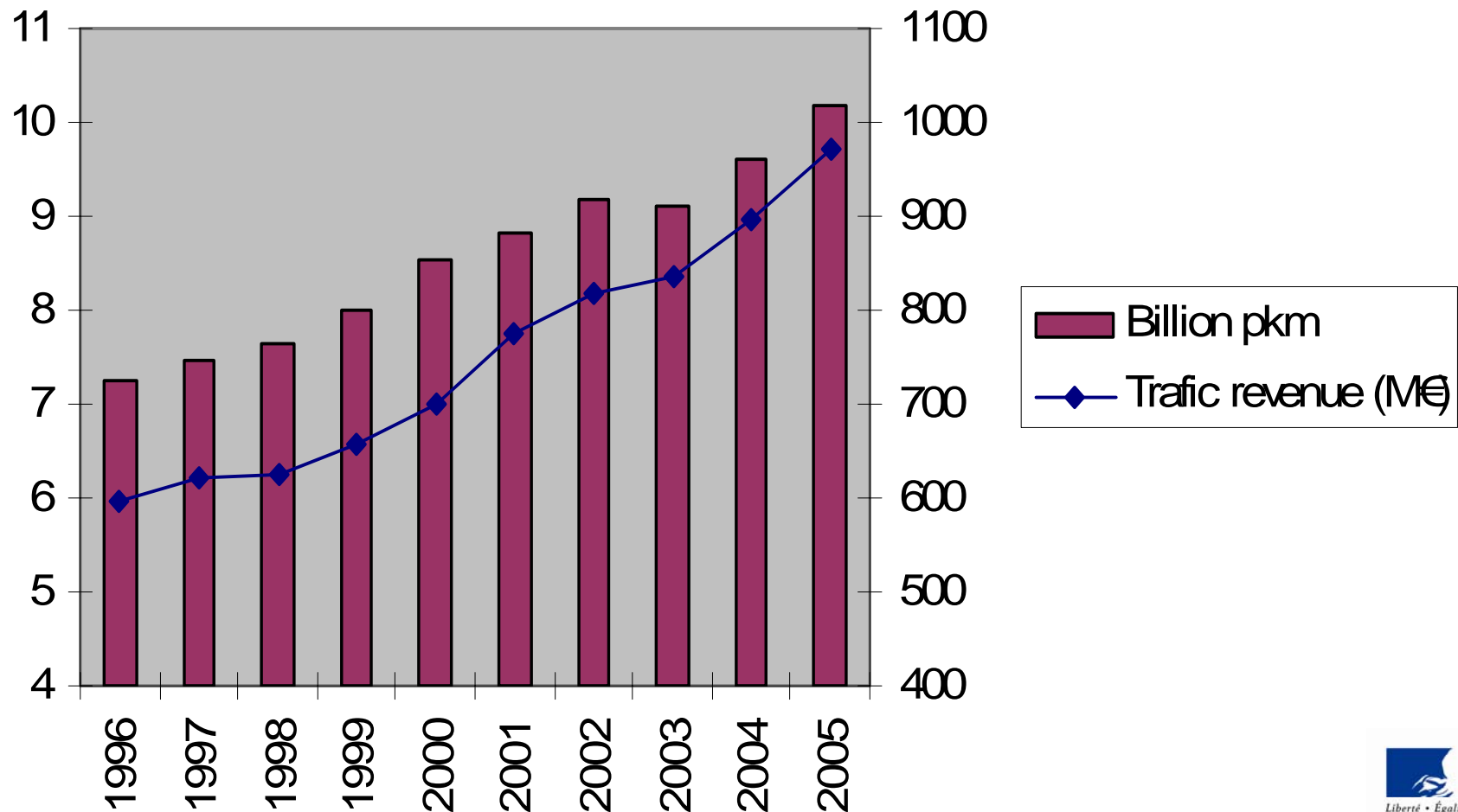
# Regional public services

- Regional authorities:
  - Define the scope of the service
  - Check the performance
  - Finance the service
- SNCF:
  - Is the only operator
  - Elaborates proposals
  - Performs the service
  - Commits itself on expenses and revenue

# Balance of the contract



# Evolution of regional traffic



# Some numbers...

- Network :  
29 000 km lines  
3 150 Passenger stations  
1 800 Freight stations
- Staff :  
SNCF : 170 000 employees  
RFF : 700 employees  
EPSF: ~100 employees

**Thank you for your kind attention.**

**I will try to answer your questions ...**

